



SANAKO Study 500 Functionalities

MULTI-CURRICULAR TEACHING WITH LIVE INTERACTION

SANAKO Study 500 is the modular software-only teaching environment for every school. The Study 500 teaching environment includes all the features and functions that are essential for effective and enjoyable teaching and learning, such as screen transfer features, audio and text communication tools, web browser and program launch capabilities, and classroom management and control features. The specially designed Extension Modules add to the functionality of this modern teaching tool.



SANAKO Study 500 offers students stimulating exercises and a variety of program sources for learning.

SANAKO Study 500 User Interface

SANAKO Study 500 is easy to use and has an intuitive interface with everyday terminology that caters for different levels of IT literacy among teaching staff.

Sessions

Study 500 sessions are the settings within which the teacher and the students proceed with the different exercises. The teacher can initiate different activities for the students and use different methods for each session.



SANAKO Study 500, Student's User Interface with Media Player and Chat windows

Communication

With Study 500, the teacher can talk to the entire class or to a group of students. The teacher can also listen to and discuss with a selected student and participate in a student's activity. In the Self- Access mode each student works independently of all the other students.

Monitoring Students

Monitoring students means listening to selected students' work and viewing their screens. Screen monitoring allows the teacher to monitor the screen activity of multiple student workstations in real time, automatically and consecutively.

Screen Transfer with Audio

Study 500 allows the teacher to share the contents of the teacher screen and talk to the students at the same time. The screen image and audio can be transferred to selected student, a group of students or to all students.

Written Assistance

The teacher can send messages to assist students with their work and the students can reply. The teacher can also initiate a textual chat session with single or multiple students. The chat feature provides an additional layer to audio-based classroom collaboration.



Remote Access

It is easy for the teacher to collaborate with selected students by accessing their computers e.g. to help with a task on the student screen while at the same time discussing with the student.

Control of Student PCs

With Study 500 the teacher has control over student PC's which allows for guidance and support of the students. The teacher can black out the student screens and/or lock the cursors and keyboards to draw their attention to a given task. The student PCs can also be shut down, restarted and logged off individually or all at the same time, for example at the end of the lesson.

Focused Web Browsing

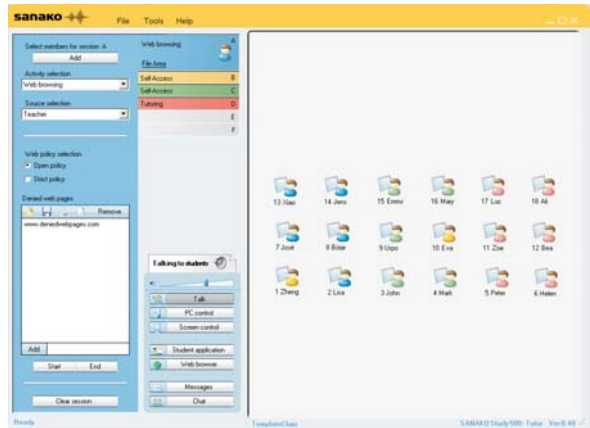
The ideal way of keeping students focused on teacher's choice of web-based material! The teacher can browse the web in order to present the material while students follow this activity. Once the presentation is over, students can be left at a prescribed point to continue with independent study.

Opening Applications and Files for Students

The teacher can launch applications on individual student computers, or start them on several student computers simultaneously. When the teacher wants the students to work with certain files, it is possible to copy and launch these files on the selected student computers.

SANAKO Study 500 Media Player

The SANAKO Study 500 Media Player allows the teacher to make use of a wide range of compatible media file formats. The teacher can remotely control the students' media playback. Students can themselves play, stop, rewind, fast forward and pause a file. Students can also open media files and set and remove bookmarks that can be used to locate places in the file for review and additional practice.



SANAKO Study 500, Teacher's User Interface



SANAKO Study 500 offers both teachers and students advanced technology and easy functionalities.

SANAKO Study 500 Extension Modules will be available later in 2005. Please check www.sanako.com/study500 or with your local representative.

High Technology from Finland



SANAKO Corporation

P.O. Box 41, FI-20741 Turku, Finland
Phone +358 2 2166 500 • Fax +358 2 2166 527
info@sanako.com, http://www.sanako.com
SANAKO User Club and Discussion Forum:
http://members.sanako.com